

Chapter 8

SQL-99: Schema Definition, Basic Constraints, and Queries



Copyright © 2004 Pearson Education, Inc.

Data Definition, Constraints, and Schema Changes

- Used to CREATE, DROP, and ALTER the descriptions of the tables (relations) of a database

Elmasri and Navathe, *Fundamentals of Database Systems, Fourth Edition*
Copyright © 2004 Ramez Elmasri and Shamkant Navathe

Slide 8-3

CREATE TABLE

- Specifies a new base relation by giving it a name, and specifying each of its attributes and their data types (INTEGER, FLOAT, DECIMAL(i,j), CHAR(n), VARCHAR(n))
- A constraint NOT NULL may be specified on an attribute

```
CREATE TABLE DEPARTMENT
(
  DNAME      VARCHAR(10) NOT NULL,
  DNUMBER    INTEGER      NOT NULL,
  MGRSSN     CHAR(9),
  MGRSTARTDATE CHAR(9) );
```

Elmasri and Navathe, *Fundamentals of Database Systems, Fourth Edition*
Copyright © 2004 Ramez Elmasri and Shamkant Navathe

Slide 8-4

CREATE TABLE

- In SQL2, can use the CREATE TABLE command for specifying the primary key attributes, secondary keys, and referential integrity constraints (foreign keys).
- Key attributes can be specified via the PRIMARY KEY and UNIQUE phrases

```
CREATE TABLE DEPT
( DNAME      VARCHAR(10) NOT NULL,
  DNUMBER    INTEGER      NOT NULL,
  MGRSSN     CHAR(9),
  MGRSTARTDATE CHAR(9),
  PRIMARY KEY (DNUMBER),
  UNIQUE (DNAME),
  FOREIGN KEY (MGRSSN) REFERENCES EMP );
```

Elmasri and Navathe, Fundamentals of Database Systems, Fourth Edition
Copyright © 2004 Ramez Elmasri and Shamkant Navathe

Slide 8-5

DROP TABLE

- Used to remove a relation (base table) *and its definition*
- The relation can no longer be used in queries, updates, or any other commands since its description no longer exists
- Example:

DROP TABLE DEPENDENT;

Elmasri and Navathe, Fundamentals of Database Systems, Fourth Edition
Copyright © 2004 Ramez Elmasri and Shamkant Navathe

Slide 8-6

ALTER TABLE

- Used to add an attribute to one of the base relations
- The new attribute will have NULLs in all the tuples of the relation right after the command is executed; hence, the NOT NULL constraint is *not allowed* for such an attribute
- Example:

```
ALTER TABLE EMPLOYEE ADD JOB  
VARCHAR(12);
```

- The database users must still enter a value for the new attribute JOB for each EMPLOYEE tuple. This can be done using the UPDATE command.

Elmasri and Navathe, Fundamentals of Database Systems, Fourth Edition
Copyright © 2004 Ramez Elmasri and Shamkant Navathe

Slide 8-7

Features Added in SQL2 and SQL-99

- **CREATE SCHEMA**
- **REFERENTIAL INTEGRITY
OPTIONS**

Elmasri and Navathe, Fundamentals of Database Systems, Fourth Edition
Copyright © 2004 Ramez Elmasri and Shamkant Navathe

Slide 8-8

CREATE SCHEMA

- Specifies a new database schema by giving it a name

REFERENTIAL INTEGRITY OPTIONS

- We can specify RESTRICT, CASCADE, SET NULL or SET DEFAULT on referential integrity constraints (foreign keys)

```
CREATE TABLE DEPT
( DNAME VARCHAR(10) NOT NULL,
  DNUMBER INTEGER NOT NULL,
  MGRSSN CHAR(9),
  MGRSTARTDATE CHAR(9),
  PRIMARY KEY (DNUMBER),
  UNIQUE (DNAME),
  FOREIGN KEY (MGRSSN) REFERENCES EMP
ON DELETE SET DEFAULT ON UPDATE
CASCADE );
```

REFERENTIAL INTEGRITY OPTIONS (continued)

```
CREATE TABLE EMP
(
  ENAME      VARCHAR(30) NOT NULL,
  ESSN      CHAR(9),
  BDATE     DATE,
  DNO       INTEGER DEFAULT 1,
  SUPERSSN  CHAR(9),
  PRIMARY KEY (ESSN),
  FOREIGN KEY (DNO) REFERENCES DEPT
ON DELETE SET DEFAULT ON UPDATE CASCADE,
  FOREIGN KEY (SUPERSSN) REFERENCES EMP
ON DELETE SET NULL ON UPDATE CASCADE );
```

Elmasri and Navathe, Fundamentals of Database Systems, Fourth Edition
Copyright © 2004 Ramez Elmasri and Shamkant Navathe

Slide 8-11

Additional Data Types in SQL2 and SQL-99

Has DATE, TIME, and TIMESTAMP data types

- **DATE:**
 - Made up of year-month-day in the format yyyy-mm-dd
- **TIME:**
 - Made up of hour:minute:second in the format hh:mm:ss
- **TIME(i):**
 - Made up of hour:minute:second plus i additional digits specifying fractions of a second
 - format is hh:mm:ss:ii...i
- **TIMESTAMP:**
 - Has both DATE and TIME components

Elmasri and Navathe, Fundamentals of Database Systems, Fourth Edition
Copyright © 2004 Ramez Elmasri and Shamkant Navathe

Slide 8-12

Additional Data Types in SQL2 and SQL-99 (cont.)

● INTERVAL:

- Specifies a relative value rather than an absolute value
- Can be DAY/TIME intervals or YEAR/MONTH intervals
- Can be positive or negative when added to or subtracted from an absolute value, the result is an absolute value

Retrieval Queries in SQL

- SQL has one basic statement for retrieving information from a database; the SELECT statement
- This is *not the same as* the SELECT operation of the relational algebra
- Important distinction between SQL and the formal relational model; SQL allows a table (relation) to have two or more tuples that are identical in all their attribute values
- Hence, an SQL relation (table) is a *multi-set* (sometimes called a bag) of tuples; it *is not* a set of tuples
- SQL relations can be constrained to be sets by specifying PRIMARY KEY or UNIQUE attributes, or by using the DISTINCT option in a query

Retrieval Queries in SQL (cont.)

- Basic form of the SQL SELECT statement is called a *mapping* or a *SELECT-FROM-WHERE block*

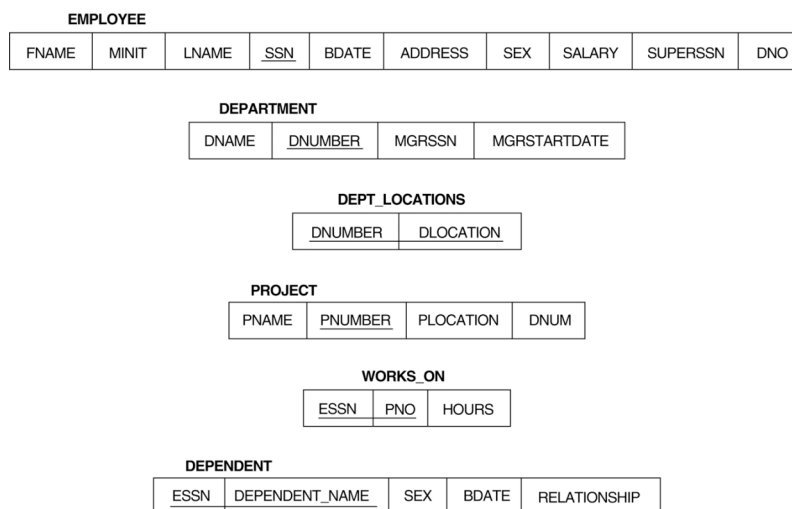
SELECT <attribute list>
FROM <table list>
WHERE <condition>

- <attribute list> is a list of attribute names whose values are to be retrieved by the query
- <table list> is a list of the relation names required to process the query
- <condition> is a conditional (Boolean) expression that identifies the tuples to be retrieved by the query

Elmasri and Navathe, *Fundamentals of Database Systems, Fourth Edition*
 Copyright © 2004 Ramez Elmasri and Shamkant Navathe

Slide 8-15

Relational Database Schema--Figure 5.5



Elmasri and Navathe, *Fundamentals of Database Systems, Fourth Edition*
 Copyright © 2004 Ramez Elmasri and Shamkant Navathe

Slide 8-16

Populated Database--Fig.5.6

EMPLOYEE	FNAME	MINIT	LNAME	SSN	BDATE	ADDRESS	SEX	SALARY	SUPERSSN	DNO
John	B	Smith	123456789	1965-01-09	731 Fonden, Houston, TX	M	30000	333445555	5	
Franklin	T	Wong	333445555	1955-12-08	638 Voss, Houston, TX	M	40000	888665555	5	
Alicia	J	Zelaya	999887777	1968-07-19	3321 Castle, Spring, TX	F	25000	987654321	4	
Jennifer	S	Wallace	987654321	1941-06-20	291 Berry, Bellare, TX	F	43000	888665555	4	
Ramesh	K	Narayan	666884444	1992-09-15	975 Fir Oak, Humble, TX	M	30000	333445555	5	
Joyce	A	English	453453493	1972-07-31	5631 Fico, Houston, TX	F	25000	333445555	5	
Ahmad	V	Jabbar	987987987	1969-03-29	980 Dallas, Houston, TX	M	25000	987654321	4	
James	E	Borg	888665555	1937-11-10	450 Stone, Houston, TX	M	55000	null	1	

DEPT_LOCATIONS	DNUMBER	DLOCATION
	1	Houston
	4	Stafford
	5	Bellare
	5	Sugarland
	5	Houston

DEPARTMENT	DNAME	DNUMBER	MGRSSN	MGRSTARTDATE
Research1		5	333445555	1988-05-22
Administration		4	987654321	1995-07-01
Headquarters		1	888665555	1981-06-19

WORKS_ON	ESSN	PNO	HOURS
	123456789	1	32.5
	123456789	2	7.5
	666884444	3	40.0
	453453453	1	20.0
	453453453	2	20.0
	333445555	2	10.0
	333445555	3	10.0
	333445555	10	10.0
	333445555	20	10.0
	999887777	30	30.0
	999887777	10	10.0
	987987987	10	35.0
	987987987	30	5.0
	987654321	30	20.0
	987654321	20	15.0
	888665555	20	null

PROJECT	PNAME	PNUMBER	PLOCATION	DNUM
ProductX		1	Bellare	5
ProductY		2	Sugarland	5
ProductZ		3	Houston	5
Computerization		10	Stafford	4
Reorganization		20	Houston	1
Newbenefits		30	Stafford	4

DEPENDENT	ESSN	DEPENDENT_NAME	SEX	BDATE	RELATIONSHIP
	333445555	Alice	F	1985-04-05	DAUGHTER
	333445555	Theodore	M	1985-10-25	SON
	333445555	Joy	F	1958-05-03	SPOUSE
	987654321	Abner	M	1942-02-28	SPOUSE
	123456789	Michael	M	1988-01-04	SON
	123456789	Alice	F	1988-12-30	DAUGHTER
	123456789	Elizabeth	F	1907-05-05	SPOUSE

Elmasri and Navathe, Fundamentals of Database Systems, Fourth Edition
 Copyright © 2004 Ramez Elmasri and Shamkant Navathe

Slide 8-17

Simple SQL Queries

- Basic SQL queries correspond to using the SELECT, PROJECT, and JOIN operations of the relational algebra
- All subsequent examples use the COMPANY database
- Example of a simple query on *one* relation
- **Query Q:** Retrieve the birthdate and address of the employee whose name is 'John B. Smith'.

**Q0: SELECT BDATE, ADDRESS
 FROM EMPLOYEE
 WHERE FNAME='John' AND MINIT='B'
 AND LNAME='Smith'**

- Similar to a SELECT-PROJECT pair of relational algebra operations; the SELECT-clause specifies the *projection attributes* and the WHERE-clause specifies the *selection condition*
- However, the result of the query *may contain* duplicate tuples

Elmasri and Navathe, Fundamentals of Database Systems, Fourth Edition
 Copyright © 2004 Ramez Elmasri and Shamkant Navathe

Slide 8-18

Simple SQL Queries (cont.)

- Query 1: Retrieve the name and address of all employees who work for the 'Research' department.

```
Q1: SELECT      FNAME, LNAME, ADDRESS
      FROM EMPLOYEE, DEPARTMENT
      WHERE      DNAME='Research' AND
      DNUMBER=DNO
```

- Similar to a SELECT-PROJECT-JOIN sequence of relational algebra operations
- (DNAME='Research') is a *selection condition* (corresponds to a SELECT operation in relational algebra)
- (DNUMBER=DNO) is a *join condition* (corresponds to a JOIN operation in relational algebra)

Elmasri and Navathe, Fundamentals of Database Systems, Fourth Edition
Copyright © 2004 Ramez Elmasri and Shamkant Navathe

Slide 8-19

Simple SQL Queries (cont.)

- Query 2: For every project located in 'Stafford', list the project number, the controlling department number, and the department manager's last name, address, and birthdate.

```
Q2: SELECT      PNUMBER, DNUM, LNAME, BDATE,
      ADDRESS
      FROM      PROJECT, DEPARTMENT, EMPLOYEE
      WHERE      DNUM=DNUMBER AND MGRSSN=SSN
      AND      PLOCATION='Stafford'
```

- In Q2, there are *two* join conditions
- The join condition DNUM=DNUMBER relates a project to its controlling department
- The join condition MGRSSN=SSN relates the controlling department to the employee who manages that department

Elmasri and Navathe, Fundamentals of Database Systems, Fourth Edition
Copyright © 2004 Ramez Elmasri and Shamkant Navathe

Slide 8-20

Aliases, * and DISTINCT, Empty WHERE-clause

- In SQL, we can use the same name for two (or more) attributes as long as the attributes are in *different relations*. A query that refers to two or more attributes with the same name must *qualify* the attribute name with the relation name by *prefixing* the relation name to the attribute name.

Example:

- EMPLOYEE.LNAME, DEPARTMENT.DNAME

ALIASES

- Some queries need to refer to the same relation twice
- In this case, *aliases* are given to the relation name
- Query 8: For each employee, retrieve the employee's name, and the name of his or her immediate supervisor.

```
Q8: SELECT      E.FNAME, E.LNAME, S.FNAME,
              S.LNAME
      FROM      EMPLOYEE E S
      WHERE     E.SUPERSSN=S.SSN
```

- In Q8, the alternate relation names E and S are called *aliases* or *tuple variables* for the EMPLOYEE relation
- We can think of E and S as two *different copies* of EMPLOYEE; E represents employees in role of *supervisees* and S represents employees in role of *supervisors*

ALIASES (cont.)

- Aliasing can also be used in any SQL query for convenience
Can also use the AS keyword to specify aliases

```

Q8:      SELECT      E.FNAME, E.LNAME, S.FNAME,
                S.LNAME
            FROM        EMPLOYEE AS E, EMPLOYEE AS S
            WHERE       E.SUPERSSN=S.SSN
  
```

UNSPECIFIED WHERE-clause

- A *missing WHERE-clause* indicates no condition; hence, *all tuples* of the relations in the FROM-clause are selected
- This is equivalent to the condition WHERE TRUE
- Query 9: Retrieve the SSN values for all employees.

```

Q9:      SELECT      SSN
            FROM        EMPLOYEE
  
```

- If more than one relation is specified in the FROM-clause *and* there is no join condition, then the *CARTESIAN PRODUCT* of tuples is selected

UNSPECIFIED WHERE-clause (cont.)

- Example:

**Q10: SELECT SSN, DNAME
 FROM EMPLOYEE, DEPARTMENT**

- It is extremely important not to overlook specifying any selection and join conditions in the WHERE-clause; otherwise, incorrect and very large relations may result

USE OF *

- To retrieve all the attribute values of the selected tuples, a * is used, which stands for *all the attributes*

Examples:

**Q1C: SELECT *
 FROM EMPLOYEE
 WHERE DNO=5**

**Q1D: SELECT *
 FROM EMPLOYEE, DEPARTMENT
 WHERE DNAME='Research' AND
 DNO=DNUMBER**

USE OF DISTINCT

- SQL does not treat a relation as a set; *duplicate tuples can appear*
- To eliminate duplicate tuples in a query result, the keyword **DISTINCT** is used
- For example, the result of Q11 may have duplicate SALARY values whereas Q11A does not have any duplicate values

```

Q11:      SELECT   SALARY
          FROM     EMPLOYEE
Q11A:    SELECT   DISTINCT SALARY
          FROM     EMPLOYEE
  
```

Elmasri and Navathe, Fundamentals of Database Systems, Fourth Edition
Copyright © 2004 Ramez Elmasri and Shamkant Navathe

Slide 8-27

SET OPERATIONS

- SQL has directly incorporated some set operations
- There is a union operation (**UNION**), and in *some versions* of SQL there are set difference (**MINUS**) and intersection (**INTERSECT**) operations
- The resulting relations of these set operations are sets of tuples; *duplicate tuples are eliminated from the result*
- The set operations apply only to *union compatible relations*; the two relations must have the same attributes and the attributes must appear in the same order

Elmasri and Navathe, Fundamentals of Database Systems, Fourth Edition
Copyright © 2004 Ramez Elmasri and Shamkant Navathe

Slide 8-28

SET OPERATIONS (cont.)

- Query 4: Make a list of all project numbers for projects that involve an employee whose last name is 'Smith' as a worker or as a manager of the department that controls the project.

```

Q4: (SELECT PNAME
FROM PROJECT, DEPARTMENT, EMPLOYEE
WHERE DNUM=DNUMBER AND MGRSSN=SSN
AND LNAME='Smith')
UNION
(SELECT PNAME
FROM PROJECT, WORKS_ON, EMPLOYEE
WHERE PNUMBER=PNO AND ESSN=SSN AND
LNAME='Smith')

```

NESTING OF QUERIES

- A complete SELECT query, called a *nested query*, can be specified within the WHERE-clause of another query, called the *outer query*
- Many of the previous queries can be specified in an alternative form using nesting
- Query 1: Retrieve the name and address of all employees who work for the 'Research' department.

```

Q1: SELECT FNAME, LNAME, ADDRESS
FROM EMPLOYEE
WHERE DNO IN (SELECT DNUMBER
FROM DEPARTMENT
WHERE DNAME='Research' )

```

NESTING OF QUERIES (cont.)

- The nested query selects the number of the 'Research' department
- The outer query select an EMPLOYEE tuple if its DNO value is in the result of either nested query
- The comparison operator **IN** compares a value *v* with a set (or multi-set) of values *V*, and evaluates to **TRUE** if *v* is one of the elements in *V*
- In general, we can have several levels of nested queries
- A reference to an *unqualified attribute* refers to the relation declared in the *innermost nested query*
- In this example, the nested query is *not correlated* with the outer query

Elmasri and Navathe, Fundamentals of Database Systems, Fourth Edition
Copyright © 2004 Ramez Elmasri and Shamkant Navathe

Slide 8-31

CORRELATED NESTED QUERIES

- If a condition in the WHERE-clause of a *nested query* references an attribute of a relation declared in the *outer query*, the two queries are said to be *correlated*
- The result of a correlated nested query is *different for each tuple (or combination of tuples) of the relation(s) the outer query*
- Query 12: Retrieve the name of each employee who has a dependent with the same first name as the employee.

```

Q12: SELECT      E.FNAME, E.LNAME
      FROM        EMPLOYEE AS E
      WHERE       E.SSN IN (SELECT      ESSN
                            FROM DEPENDENT
                            WHERE       ESSN=E.SSN AND
                            E.FNAME=DEPENDENT_NAME)

```

Elmasri and Navathe, Fundamentals of Database Systems, Fourth Edition
Copyright © 2004 Ramez Elmasri and Shamkant Navathe

Slide 8-32

CORRELATED NESTED QUERIES (cont.)

- In Q12, the nested query has a different result *for each tuple* in the outer query
- A query written with nested SELECT... FROM... WHERE... blocks and using the = or IN comparison operators can *always* be expressed as a single block query. For example, Q12 may be written as in Q12A

```
Q12A:  SELECT      E.FNAME, E.LNAME
        FROM        EMPLOYEE E, DEPENDENT D
        WHERE       E.SSN=D.ESSN AND
                   E.FNAME=D.DEPENDENT_NAME
```

- The original SQL as specified for SYSTEM R also had a **CONTAINS** comparison operator, which is used in conjunction with nested correlated queries
- This operator was dropped from the language, possibly because of the difficulty in implementing it efficiently

Elmasri and Navathe, *Fundamentals of Database Systems, Fourth Edition*
Copyright © 2004 Ramez Elmasri and Shamkant Navathe

Slide 8-33

CORRELATED NESTED QUERIES (cont.)

- Most implementations of SQL *do not* have this operator
- The CONTAINS operator compares two *sets of values*, and returns TRUE if one set contains all values in the other set (reminiscent of the *division* operation of algebra).
 - Query 3: Retrieve the name of each employee who works on *all* the projects controlled by department number 5.

```
Q3:    SELECT FNAME, LNAME
        FROM EMPLOYEE
        WHERE ((SELECT      PNO
                  FROM WORKS_ON
                  WHERE     SSN=ESSN)
              CONTAINS
              (SELECT      PNUMBER
                  FROM PROJECT
                  WHERE     DNUM=5))
```

Elmasri and Navathe, *Fundamentals of Database Systems, Fourth Edition*
Copyright © 2004 Ramez Elmasri and Shamkant Navathe

Slide 8-34

CORRELATED NESTED QUERIES (cont.)

- In Q3, the second nested query, which is not correlated with the outer query, retrieves the project numbers of all projects controlled by department 5
- The first nested query, which is correlated, retrieves the project numbers on which the employee works, which is different *for each employee tuple* because of the correlation

Elmasri and Navathe, *Fundamentals of Database Systems, Fourth Edition*
Copyright © 2004 Ramez Elmasri and Shamkant Navathe

Slide 8-35

THE EXISTS FUNCTION

- EXISTS is used to check whether the result of a correlated nested query is empty (contains no tuples) or not
- We can formulate Query 12 in an alternative form that uses EXISTS as Q12B below

Elmasri and Navathe, *Fundamentals of Database Systems, Fourth Edition*
Copyright © 2004 Ramez Elmasri and Shamkant Navathe

Slide 8-36

THE EXISTS FUNCTION (cont.)

- Query 12: Retrieve the name of each employee who has a dependent with the same first name as the employee.

```

Q12B:  SELECT  FNAME, LNAME
          FROM    EMPLOYEE
          WHERE   EXISTS  (SELECT  *
                           FROM    DEPENDENT
                           WHERE   SSN=ESSN AND
                                   FNAME=DEPENDENT_NAME)

```

Elmasri and Navathe, Fundamentals of Database Systems, Fourth Edition
Copyright © 2004 Ramez Elmasri and Shamkant Navathe

Slide 8-37

THE EXISTS FUNCTION (cont.)

- Query 6: Retrieve the names of employees who have no dependents.

```

Q6:      SELECT  FNAME, LNAME
          FROM    EMPLOYEE
          WHERE   NOT EXISTS (SELECT  *
                              FROM    DEPENDENT
                              WHERE   SSN=ESSN)

```

- In Q6, the correlated nested query retrieves all DEPENDENT tuples related to an EMPLOYEE tuple. If *none exist*, the EMPLOYEE tuple is selected
- EXISTS is necessary for the expressive power of SQL

Elmasri and Navathe, Fundamentals of Database Systems, Fourth Edition
Copyright © 2004 Ramez Elmasri and Shamkant Navathe

Slide 8-38

EXPLICIT SETS

- It is also possible to use an **explicit (enumerated) set of values** in the WHERE-clause rather than a nested query
- Query 13: Retrieve the social security numbers of all employees who work on project number 1, 2, or 3.

```

Q13:      SELECT      DISTINCT ESSN
           FROM        WORKS_ON
           WHERE       PNO IN (1, 2, 3)

```

NULLS IN SQL QUERIES

- SQL allows queries that check if a value is NULL (missing or undefined or not applicable)
- SQL uses **IS** or **IS NOT** to compare NULLs because it considers each NULL value distinct from other NULL values, so equality comparison is not appropriate.
- Query 14: Retrieve the names of all employees who do not have supervisors.

```

Q14:      SELECT      FNAME, LNAME
           FROM        EMPLOYEE
           WHERE       SUPERSSN IS NULL

```

Note: If a join condition is specified, tuples with NULL values for the join attributes are not included in the result

Joined Relations Feature in SQL2

- Can specify a "joined relation" in the FROM-clause
- Looks like any other relation but is the result of a join
- Allows the user to specify different types of joins (regular "theta" JOIN, NATURAL JOIN, LEFT OUTER JOIN, RIGHT OUTER JOIN, CROSS JOIN, etc)

Elmasri and Navathe, *Fundamentals of Database Systems, Fourth Edition*
Copyright © 2004 Ramez Elmasri and Shamkant Navathe

Slide 8-41

Joined Relations Feature in SQL2 (cont.)

- Examples:

```
Q8: SELECT      E.FNAME, E.LNAME, S.FNAME, S.LNAME
      FROM      EMPLOYEE E S
      WHERE     E.SUPERSSN=S.SSN
```

can be written as:

```
Q8: SELECT      E.FNAME, E.LNAME, S.FNAME, S.LNAME
      FROM (EMPLOYEE E LEFT OUTER JOIN EMPLOYEES
            ON E.SUPERSSN=S.SSN)
```

```
Q1: SELECT      FNAME, LNAME, ADDRESS
      FROM EMPLOYEE, DEPARTMENT
      WHERE     DNAME='Research' AND DNUMBER=DNO
```

Elmasri and Navathe, *Fundamentals of Database Systems, Fourth Edition*
Copyright © 2004 Ramez Elmasri and Shamkant Navathe

Slide 8-42

Joined Relations Feature in SQL2 (cont.)

- could be written as:

```
Q1: SELECT      FNAME, LNAME, ADDRESS
FROM (EMPLOYEE JOIN DEPARTMENT
      ON DNUMBER=DNO)
WHERE         DNAME='Research'
```

or as:

```
Q1: SELECT      FNAME, LNAME, ADDRESS
FROM (EMPLOYEE NATURAL JOIN DEPARTMENT
      AS DEPT(DNAME, DNO, MSSN, MSDATE)
WHERE         DNAME='Research'
```

Elmasri and Navathe, Fundamentals of Database Systems, Fourth Edition
Copyright © 2004 Ramez Elmasri and Shamkant Navathe

Slide 8-43

Joined Relations Feature in SQL2 (cont.)

- Another Example;
 - Q2 could be written as follows; this illustrates multiple joins in the joined tables

```
Q2:  SELECT      PNUMBER, DNUM,
        LNAME,          BDATE,
        ADDRESS
FROM      (PROJECT JOIN
            DEPARTMENT ON
            DNUM=DNUMBER) JOIN
            EMPLOYEE ON
            MGRSSN=SSN) )
WHERE     PLOCATION='Stafford'
```

Elmasri and Navathe, Fundamentals of Database Systems, Fourth Edition
Copyright © 2004 Ramez Elmasri and Shamkant Navathe

Slide 8-44

AGGREGATE FUNCTIONS

- Include **COUNT**, **SUM**, **MAX**, **MIN**, and **AVG**
- Query 15: Find the maximum salary, the minimum salary, and the average salary among all employees.

```

Q15:      SELECT      MAX(SALARY),
                MIN(SALARY), AVG(SALARY)
                FROM      EMPLOYEE
  
```

- Some SQL implementations *may not allow more than one function* in the SELECT-clause

AGGREGATE FUNCTIONS (cont.)

- Query 16: Find the maximum salary, the minimum salary, and the average salary among employees who work for the 'Research' department.

```

Q16: SELECT  MAX(SALARY), MIN(SALARY),
                AVG(SALARY)
                FROM    EMPLOYEE, DEPARTMENT
                WHERE    DNO=DNUMBER AND
                        DNAME='Research'
  
```

AGGREGATE FUNCTIONS (cont.)

- Queries 17 and 18: Retrieve the total number of employees in the company (Q17), and the number of employees in the 'Research' department (Q18).

Q17: **SELECT COUNT (*)**
 FROM EMPLOYEE

Q18: **SELECT COUNT (*)**
 FROM EMPLOYEE,
 DEPARTMENT
 WHERE DNO=DNUMBER AND
 DNAME='Research'

Elmasri and Navathe, Fundamentals of Database Systems, Fourth Edition
Copyright © 2004 Ramez Elmasri and Shamkant Navathe

Slide 8-47

GROUPING

- In many cases, we want to apply the aggregate functions *to subgroups of tuples in a relation*
- Each subgroup of tuples consists of the set of tuples that have *the same value* for the *grouping attribute(s)*
- The function is applied to each subgroup independently
- SQL has a **GROUP BY**-clause for specifying the grouping attributes, which *must also appear in the SELECT-clause*

Elmasri and Navathe, Fundamentals of Database Systems, Fourth Edition
Copyright © 2004 Ramez Elmasri and Shamkant Navathe

Slide 8-48

GROUPING (cont.)

- Query 20: For each department, retrieve the department number, the number of employees in the department, and their average salary.

```
Q20: SELECT      DNO, COUNT (*), AVG (SALARY)
FROM EMPLOYEE
GROUP BY      DNO
```

- In Q20, the EMPLOYEE tuples are divided into groups--each group having the same value for the grouping attribute DNO
- The COUNT and AVG functions are applied to each such group of tuples separately
- The SELECT-clause includes only the grouping attribute and the functions to be applied on each group of tuples
- A join condition can be used in conjunction with grouping

Elmasri and Navathe, Fundamentals of Database Systems, Fourth Edition
Copyright © 2004 Ramez Elmasri and Shamkant Navathe

Slide 8-49

GROUPING (cont.)

- Query 21: For each project, retrieve the project number, project name, and the number of employees who work on that project.

```
Q21:      SELECT      PNUMBER, PNAME, COUNT (*)
FROM      PROJECT, WORKS_ON
WHERE     PNUMBER=PNO
GROUP BY  PNUMBER, PNAME
```

- In this case, the grouping and functions are applied *after* the joining of the two relations

Elmasri and Navathe, Fundamentals of Database Systems, Fourth Edition
Copyright © 2004 Ramez Elmasri and Shamkant Navathe

Slide 8-50

THE HAVING-CLAUSE

- Sometimes we want to retrieve the values of these functions for only those *groups that satisfy certain conditions*
- The HAVING-clause is used for specifying a selection condition on groups (rather than on individual tuples)

Elmasri and Navathe, *Fundamentals of Database Systems, Fourth Edition*
Copyright © 2004 Ramez Elmasri and Shamkant Navathe

Slide 8-51

THE HAVING-CLAUSE (cont.)

- Query 22: For each project *on which more than two employees work*, retrieve the project number, project name, and the number of employees who work on that project.

```

Q22:      SELECT    PNUMBER, PNAME, COUNT
                (*)
            FROM    PROJECT, WORKS_ON
            WHERE   PNUMBER=PNO
            GROUP BY PNUMBER, PNAME
            HAVING  COUNT (*) > 2

```

Elmasri and Navathe, *Fundamentals of Database Systems, Fourth Edition*
Copyright © 2004 Ramez Elmasri and Shamkant Navathe

Slide 8-52

SUBSTRING COMPARISON

- The **LIKE** comparison operator is used to compare partial strings
- Two reserved characters are used: '%' (or '*' in some implementations) replaces an arbitrary number of characters, and '_' replaces a single arbitrary character

Elmasri and Navathe, *Fundamentals of Database Systems, Fourth Edition*
Copyright © 2004 Ramez Elmasri and Shamkant Navathe

Slide 8-53

SUBSTRING COMPARISON (cont.)

- Query 25: Retrieve all employees whose address is in Houston, Texas. Here, the value of the ADDRESS attribute must contain the substring 'Houston,TX'.

```

Q25:      SELECT      FNAME, LNAME
           FROM        EMPLOYEE
           WHERE       ADDRESS LIKE
                    '%Houston,TX%'
  
```

Elmasri and Navathe, *Fundamentals of Database Systems, Fourth Edition*
Copyright © 2004 Ramez Elmasri and Shamkant Navathe

Slide 8-54

SUBSTRING COMPARISON (cont.)

- Query 26: Retrieve all employees who were born during the 1950s. Here, '5' must be the 8th character of the string (according to our format for date), so the BDATE value is '_____5_', with each underscore as a place holder for a single arbitrary character.

```
Q26:      SELECT      FNAME, LNAME
          FROM        EMPLOYEE
          WHERE       BDATE LIKE '_____5_'
```

- The LIKE operator allows us to get around the fact that each value is considered atomic and indivisible; hence, in SQL, character string attribute values are not atomic

Elmasri and Navathe, Fundamentals of Database Systems, Fourth Edition
Copyright © 2004 Ramez Elmasri and Shamkant Navathe

Slide 8-55

ARITHMETIC OPERATIONS

- The standard arithmetic operators '+', '-', '*', and '/' (for addition, subtraction, multiplication, and division, respectively) can be applied to numeric values in an SQL query result
- Query 27: Show the effect of giving all employees who work on the 'ProductX' project a 10% raise.

```
Q27: SELECT      FNAME, LNAME, 1.1*SALARY
          FROM    EMPLOYEE, WORKS_ON, PROJECT
          WHERE   SSN=ESSN AND PNO=PNUMBER AND
          PNAME='ProductX'
```

Elmasri and Navathe, Fundamentals of Database Systems, Fourth Edition
Copyright © 2004 Ramez Elmasri and Shamkant Navathe

Slide 8-56

ORDER BY

- The **ORDER BY** clause is used to sort the tuples in a query result based on the values of some attribute(s)
- Query 28: Retrieve a list of employees and the projects each works in, ordered by the employee's department, and within each department ordered alphabetically by employee last name.

```

Q28:      SELECT      DNAME, LNAME, FNAME, PNAME
          FROM        DEPARTMENT, EMPLOYEE,
                   WORKS_ON, PROJECT
          WHERE       DNUMBER=DNO AND SSN=ESSN
          AND         PNO=PNUMBER
          ORDER BY   DNAME, LNAME
  
```

Elmasri and Navathe, Fundamentals of Database Systems, Fourth Edition
Copyright © 2004 Ramez Elmasri and Shamkant Navathe

Slide 8-57

ORDER BY (cont.)

- The default order is in ascending order of values
- We can specify the keyword **DESC** if we want a descending order; the keyword **ASC** can be used to explicitly specify ascending order, even though it is the default

Elmasri and Navathe, Fundamentals of Database Systems, Fourth Edition
Copyright © 2004 Ramez Elmasri and Shamkant Navathe

Slide 8-58

Summary of SQL Queries

- A query in SQL can consist of up to six clauses, but only the first two, SELECT and FROM, are mandatory. The clauses are specified in the following order:

```

SELECT  <attribute list>
FROM    <table list>
[WHERE  <condition>]
[GROUP BY <grouping attribute(s)>]
[HAVING <group condition>]
[ORDER BY <attribute list>]
  
```

Summary of SQL Queries (cont.)

- The SELECT-clause lists the attributes or functions to be retrieved
- The FROM-clause specifies all relations (or aliases) needed in the query but not those needed in nested queries
- The WHERE-clause specifies the conditions for selection and join of tuples from the relations specified in the FROM-clause
- GROUP BY specifies grouping attributes
- HAVING specifies a condition for selection of groups
- ORDER BY specifies an order for displaying the result of a query
- A query is evaluated by first applying the WHERE-clause, then GROUP BY and HAVING, and finally the SELECT-clause

Specifying Updates in SQL

- There are three SQL commands to modify the database; INSERT, DELETE, and UPDATE

INSERT

- In its simplest form, it is used to add one or more tuples to a relation
- Attribute values should be listed in the same order as the attributes were specified in the CREATE TABLE command

INSERT (cont.)

- Example:

```
U1: INSERT INTO EMPLOYEE
     VALUES ('Richard','K','Marini', '653298653', '30-DEC-52',
            '98 Oak Forest,Katy,TX', 'M', 37000,'987654321', 4 )
```

- An alternate form of INSERT specifies explicitly the attribute names that correspond to the values in the new tuple
- Attributes with NULL values can be left out
- Example: Insert a tuple for a new EMPLOYEE for whom we only know the FNAME, LNAME, and SSN attributes.

```
U1A: INSERT INTO EMPLOYEE (FNAME, LNAME, SSN)
     VALUES ('Richard', 'Marini', '653298653')
```

INSERT (cont.)

- Important Note: Only the constraints specified in the DDL commands are automatically enforced by the DBMS when updates are applied to the database
- Another variation of INSERT allows insertion of *multiple tuples* resulting from a query into a relation

INSERT (cont.)

- Example: Suppose we want to create a temporary table that has the name, number of employees, and total salaries for each department. A table DEPTS_INFO is created by U3A, and is loaded with the summary information retrieved from the database by the query in U3B.

```
U3A:  CREATE TABLE DEPTS_INFO
      (DEPT_NAME  VARCHAR(10),
       NO_OF_EMPS INTEGER,
       TOTAL_SAL  INTEGER);
```

```
U3B:  INSERT INTO  DEPTS_INFO (DEPT_NAME,
                          NO_OF_EMPS, TOTAL_SAL)
      SELECT
      FROM          DNAME, COUNT (*), SUM (SALARY)
      DEPARTMENT, EMPLOYEE
      WHERE         DNUMBER=DNO
      GROUP BY     DNAME ;
```

INSERT (cont.)

- Note: The DEPTS_INFO table may not be up-to-date if we change the tuples in either the DEPARTMENT or the EMPLOYEE relations *after* issuing U3B. We have to create a view (see later) to keep such a table up to date.

DELETE

- Removes tuples from a relation
- Includes a WHERE-clause to select the tuples to be deleted
- Tuples are deleted from only *one table* at a time (unless CASCADE is specified on a referential integrity constraint)
- A missing WHERE-clause specifies that *all tuples* in the relation are to be deleted; the table then becomes an empty table
- The number of tuples deleted depends on the number of tuples in the relation that satisfy the WHERE-clause
- Referential integrity should be enforced

Elmasri and Navathe, *Fundamentals of Database Systems, Fourth Edition*
Copyright © 2004 Ramez Elmasri and Shamkant Navathe

Slide 8-67

DELETE (cont.)

- Examples:

U4A: **DELETE FROM EMPLOYEE**
 WHERE LNAME='Brown'

U4B: **DELETE FROM EMPLOYEE**
 WHERE SSN='123456789'

U4C: **DELETE FROM EMPLOYEE**
 WHERE DNO IN
 (SELECT DNUMBER
 FROM DEPARTMENT
 WHERE DNAME='Research')

U4D: **DELETE FROM EMPLOYEE**

Elmasri and Navathe, *Fundamentals of Database Systems, Fourth Edition*
Copyright © 2004 Ramez Elmasri and Shamkant Navathe

Slide 8-68

UPDATE

- Used to modify attribute values of one or more selected tuples
- A WHERE-clause selects the tuples to be modified
- An additional SET-clause specifies the attributes to be modified and their new values
- Each command modifies tuples *in the same relation*
- Referential integrity should be enforced

Elmasri and Navathe, *Fundamentals of Database Systems, Fourth Edition*
Copyright © 2004 Ramez Elmasri and Shamkant Navathe

Slide 8-69

UPDATE (cont.)

- Example: Change the location and controlling department number of project number 10 to 'Bellaire' and 5, respectively.

```

U5: UPDATE   PROJECT
SET         PLOCATION = 'Bellaire', DNUM = 5
WHERE      PNUMBER=10

```

Elmasri and Navathe, *Fundamentals of Database Systems, Fourth Edition*
Copyright © 2004 Ramez Elmasri and Shamkant Navathe

Slide 8-70

UPDATE (cont.)

- Example: Give all employees in the 'Research' department a 10% raise in salary.

```
U6: UPDATE      EMPLOYEE
      SET        SALARY = SALARY *1.1
      WHERE      DNO IN (SELECT  DNUMBER
                          FROM    DEPARTMENT
                          WHERE    DNAME='Research')
```

- In this request, the modified SALARY value depends on the original SALARY value in each tuple
- The reference to the SALARY attribute on the right of = refers to the old SALARY value before modification
- The reference to the SALARY attribute on the left of = refers to the new SALARY value after modification