

## UML Activity Diagram

In UML, the activity diagram is used to demonstrate the flow of control within the system rather than the implementation. It models the concurrent and sequential activities.

The activity diagram helps in envisioning the workflow from one activity to another. It put emphasis on the condition of flow and the order in which it occurs. The flow can be sequential, branched, or concurrent, and to deal with such kinds of flows, the activity diagram has come up with a fork, join, etc.

It is also termed as an object-oriented flowchart. It encompasses activities composed of a set of actions or operations that are applied to model the behavioral diagram.

### Components of an Activity Diagram

Following are the component of an activity diagram:

#### Activities

The categorization of behavior into one or more actions is termed as an activity. In other words, it can be said that an activity is a network of nodes that are connected by edges. The edges depict the flow of execution. It may contain action nodes, control nodes, or object nodes.

The control flow of activity is represented by control nodes and object nodes that illustrates the objects used within an activity. The activities are initiated at the initial node and are terminated at the final node.



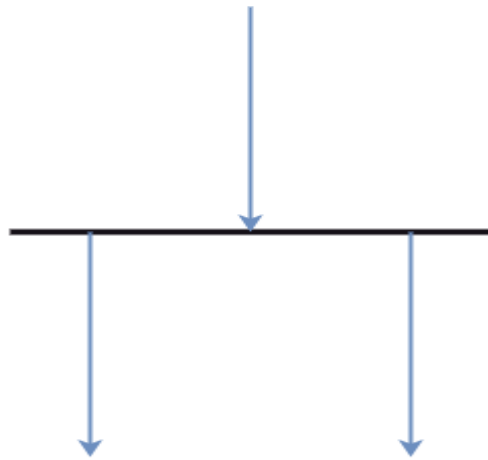
#### Activity partition /swimlane

The swimlane is used to cluster all the related activities in one column or one row. It can be either vertical or horizontal. It used to add modularity to the activity diagram. It is not necessary to incorporate swimlane in the activity diagram. But it is used to add more transparency to the activity diagram.



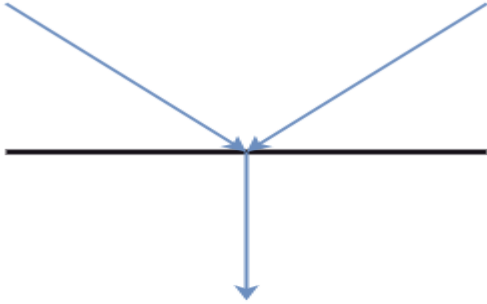
### **Forks**

Forks and join nodes generate the concurrent flow inside the activity. A fork node consists of one inward edge and several outward edges. It is the same as that of various decision parameters. Whenever a data is received at an inward edge, it gets copied and split crossways various outward edges. It split a single inward flow into multiple parallel flows.



### **Join Nodes**

Join nodes are the opposite of fork nodes. A Logical AND operation is performed on all of the inward edges as it synchronizes the flow of input across one single output (outward) edge.



## **Pins**

It is a small rectangle, which is attached to the action rectangle. It clears out all the messy and complicated thing to manage the execution flow of activities. It is an object node that precisely represents one input to or output from the action.

## **Notation of an Activity diagram**

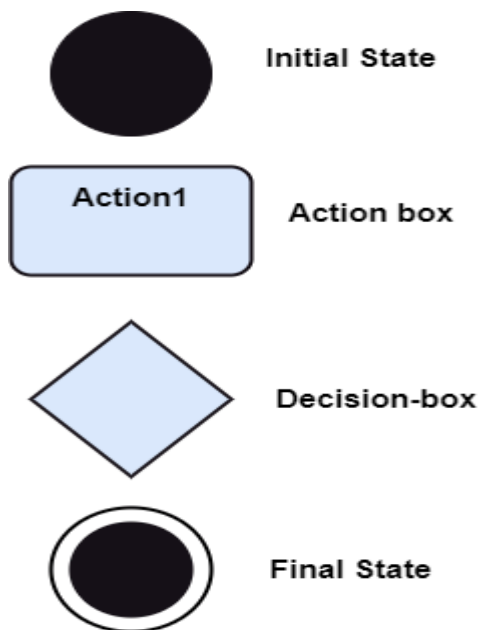
Activity diagram constitutes following notations:

**Initial State:** It depicts the initial stage or beginning of the set of actions.

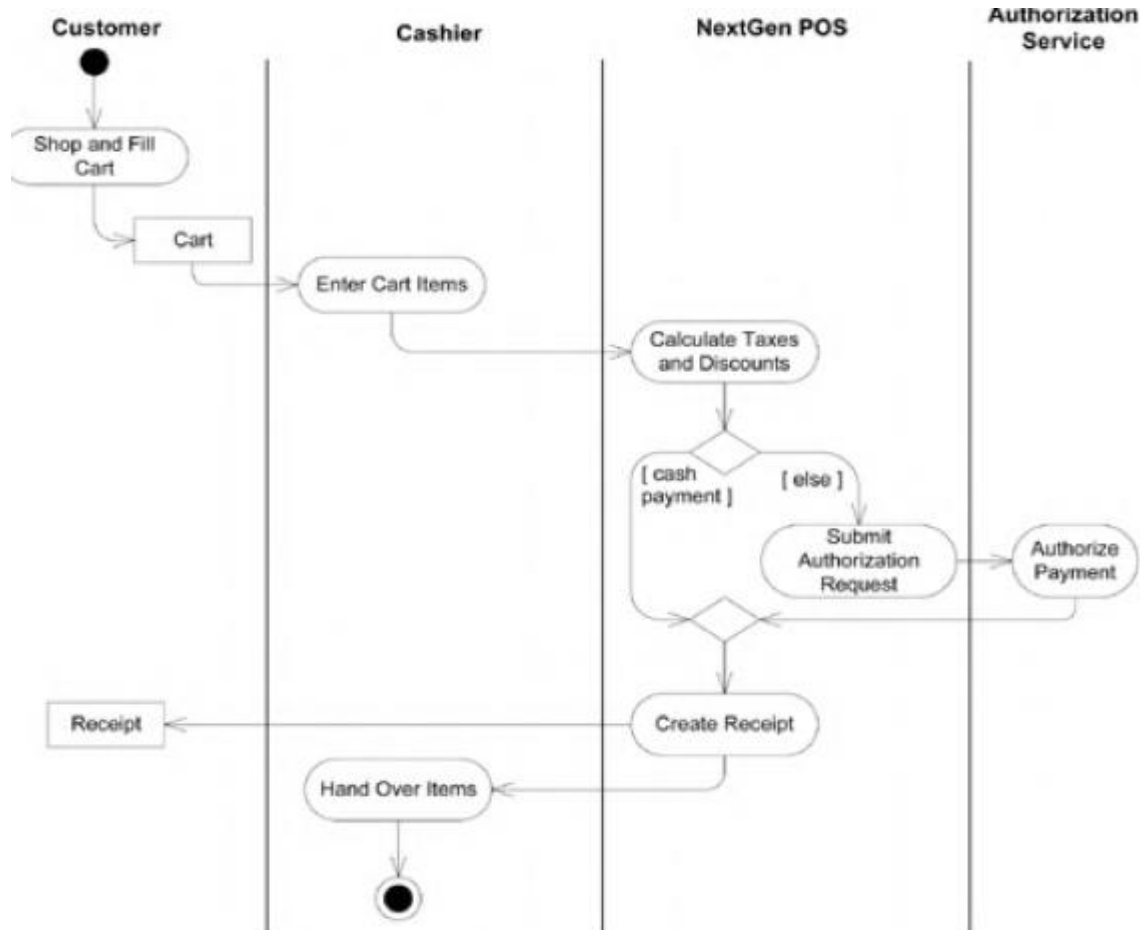
**Final State:** It is the stage where all the control flows and object flows end.

**Decision Box:** It makes sure that the control flow or object flow will follow only one path.

**Action Box:** It represents the set of actions that are to be performed.



## Example of an Activity Diagram



## When to use an Activity Diagram?

An activity diagram can be used to portray business processes and workflows. Also, it used for modeling business as well as the software. An activity diagram is utilized for the followings:

1. To graphically model the workflow in an easier and understandable way.
2. To model the execution flow among several activities.
3. To model comprehensive information of a function or an algorithm employed within the system.
4. To model the business process and its workflow.
5. To envision the dynamic aspect of a system.
6. To generate the top-level flowcharts for representing the workflow of an application.
7. To represent a high-level view of a distributed or an object-oriented system.

**Question:**

To model activity diagram for your project domain