

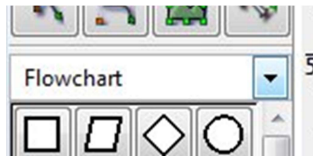
**Department of Computer Science and Engineering,  
Anna University, Chennai  
CS6106 – Database Management Systems  
Practical  
Sem/Batch : IV/Q**

**Link to Download Dia Tool**

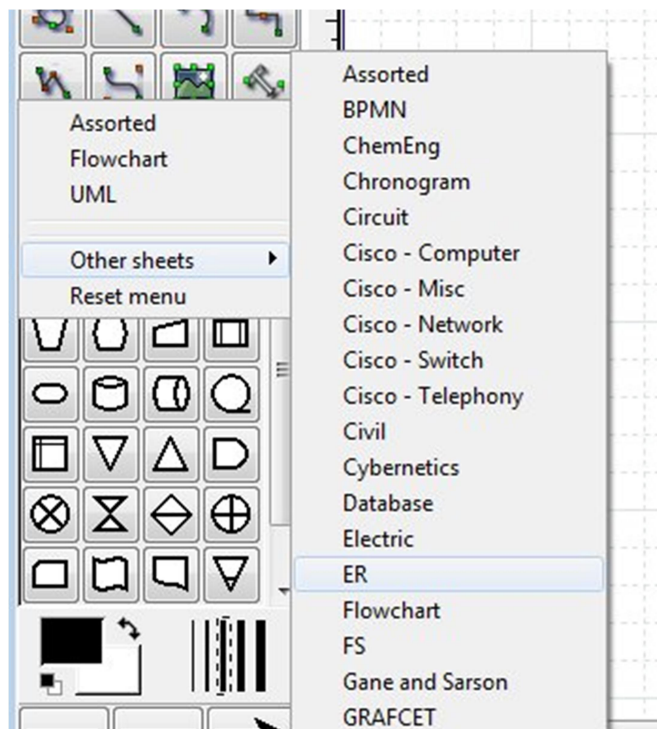
<http://dia-installer.de/>

**Instructions to Use**

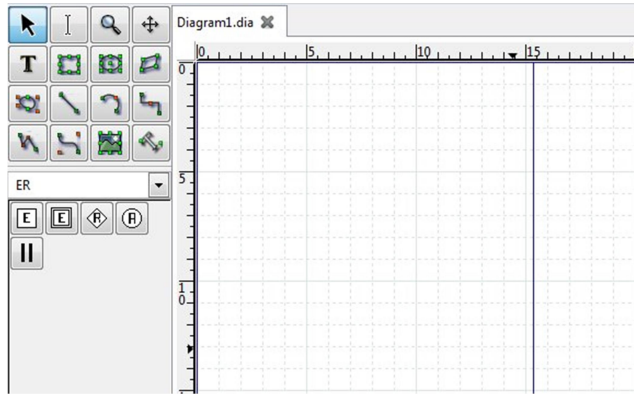
1. Once, Installed, You can run it from your windows machine through : **Start → All Programs → Dia → Dia**
2. Click on the **arrow** next to **Flowchart** shown below To get the list of available diagrams



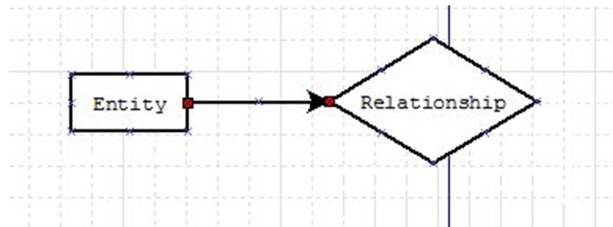
3. Choose from the options: **Other Sheets → ER**



4. You will get the toolbox for ER components (entity, relationship, attribute, lines ...) shown on the left side.



5. To start drawing, click on the icon of *Entity* Then click inside the white drawing canvas and so on.
6. Use the connecting line icon to connect entities to relationships.



7. To change the cardinality of a line, double click on the line and choose the relevant options.

